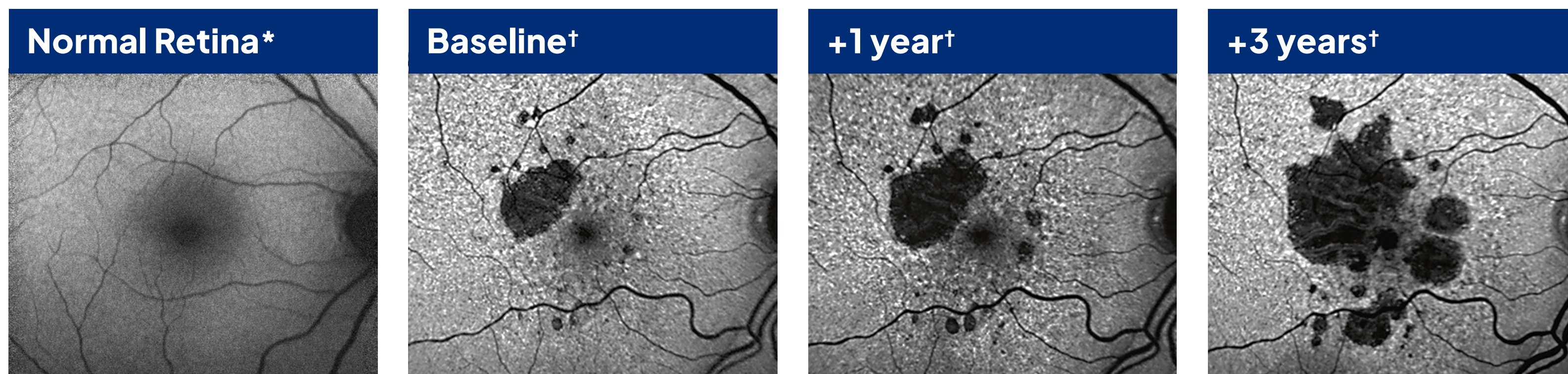


As Geographic Atrophy **GA** grows, it can damage your vision faster than you think

Example of GA lesion progression in a person over time



How GA can affect vision over time



Images are for illustrative purposes only. Progression of GA lesions and vision impairment due to GA may vary.

GA, the advanced form of dry age-related macular degeneration (AMD), can irreversibly damage parts of your eye responsible for central vision. It can affect your ability to read, drive at night, and recognize faces.

Slow GA progression. Talk to your eye doctor and visit GAresources.com today!

*Image courtesy of Mohammad Rafieetary, OD, Charles Retina Institute.

†Reproduced from Steffen Schmitz-Valckenberg. The Journey of "Geographic Atrophy" through Past, Present, and Future. *Ophthalmologica*. 2017;237:11-20. Copyright 2017 Karger Publishers, Basel, Switzerland.